



Quayle Crescent, Whetstone, N20 0BH  
£1,075,000 Freehold Council Tax Band G

**REAL ESTATES**  
Est.1981

Estate Agents · Residential Sales · Investments · Lettings



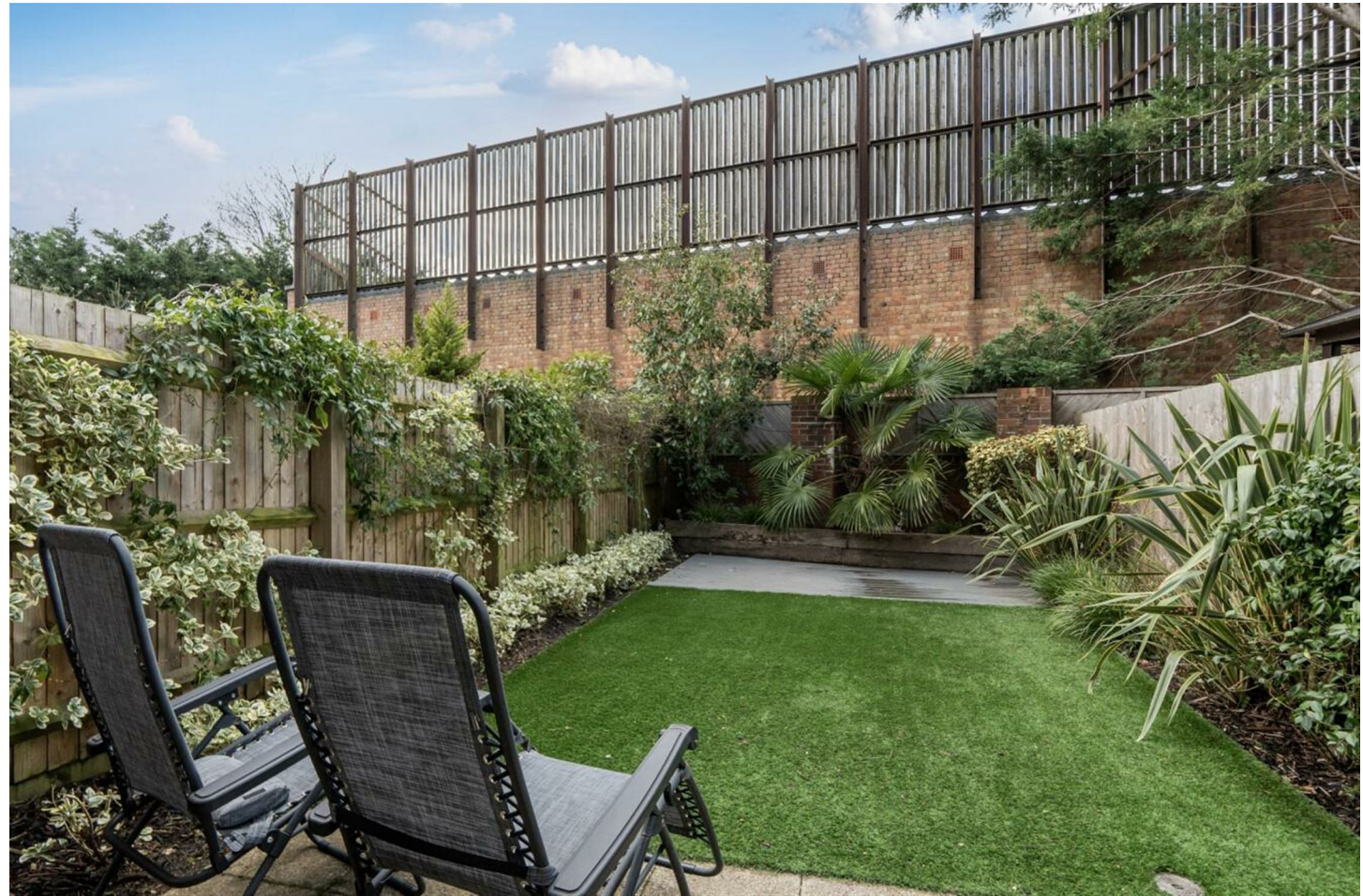
Real Estates are delighted to offer for sale this well-presented four-bedroom terraced home located in the heart of Whetstone, offering generous living space and a practical layout ideal for families and professionals.

The property features a private driveway providing off-street parking. Inside, a welcoming entrance hall leads to a bright lounge with large windows, a modern kitchen fitted with quality appliances, ample storage, and dining area ideal for everyday living and entertaining.

On the upper levels there are four well-proportioned bedrooms, three bathrooms with the property measuring in excess of 1,800 sq. ft. . The principal bedroom benefits from an en-suite, while the remaining bedrooms are suitable for family use, guests, or home working.

This is a spacious and well-maintained home with moments walk of Whetstone High road and its local amenities and Totteridge & Whetstone underground station with Oakleigh Park overground station also within close proximity.

Early viewing is recommended by Real Estates the proud Sole Agents.



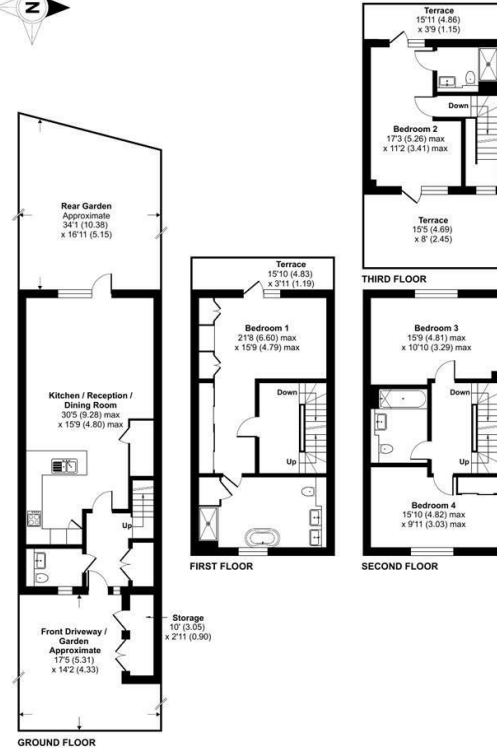






## Quayle Crescent, London, N20

Approximate Area = 1820 sq ft / 169 sq m  
For identification only - Not to scale



Floor plan produced in accordance with RICS Property Measurement 2nd Edition, incorporating International Property Measurement Standards (IPMS2 Residential). © richcom 2026. Produced for Real Estates. REF: 1402270

Energy Efficiency Rating		
Very energy efficient - lower running costs	Current	Potential
A (92-100)	86	93
B (81-91)		
C (69-80)		
D (55-68)		
E (49-54)		
F (39-48)		
G (31-38)		
H (21-30)		
I (1-20)		
Not energy efficient - higher running costs		
EU Directive		



**Real EstatesTottenham Office:**  
32 Tottenham Lane  
Tottenham N20 9QJ

II : 0208 445 3132  
e : info@realestates-wsp.co.uk  
w : www.realestates-wsp.co.uk